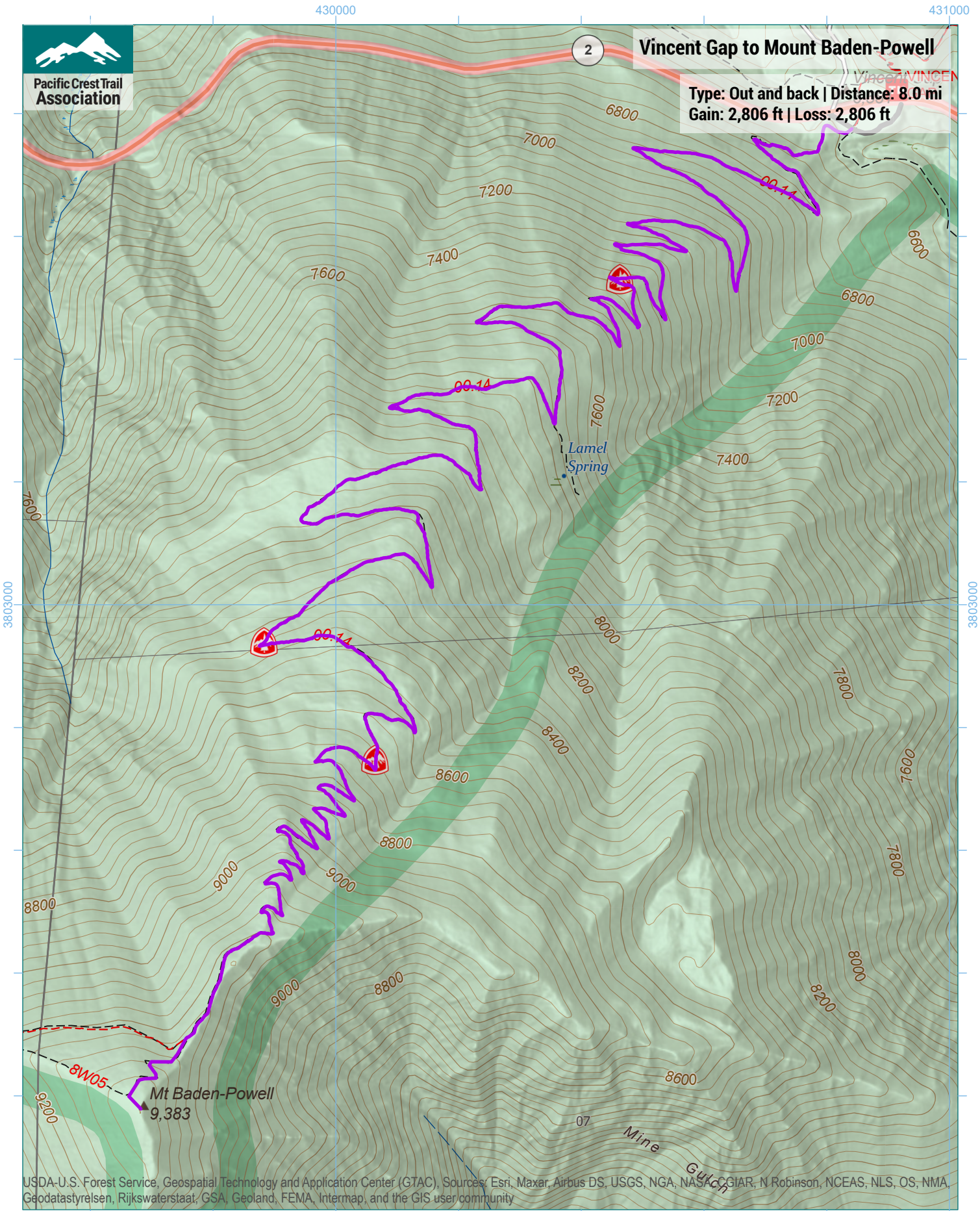




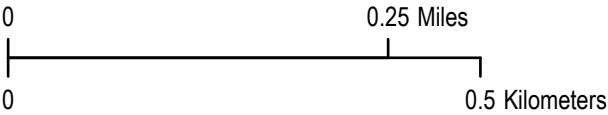
Vincent Gap to Mount Baden-Powell

Type: Out and back | Distance: 8.0 mi
Gain: 2,806 ft | Loss: 2,806 ft

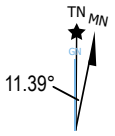
2



USDA-U.S. Forest Service, Geospatial Technology and Application Center (GTAC), Sources: Esri, Maxar, Airbus DS, USGS, NGA, NASA, CGIAR, N Robinson, NCEAS, NLS, OS, NMA, Geodatastyrelsen, Rijkswaterstaat, GSA, Geoland, FEMA, Intermap, and the GIS user community



1 inch equals 667 feet
1:8,000
WGS 1984 UTM Zone 11N



Trip data by PCTA
Basemap by US Forest Service
Contour interval: 40ft